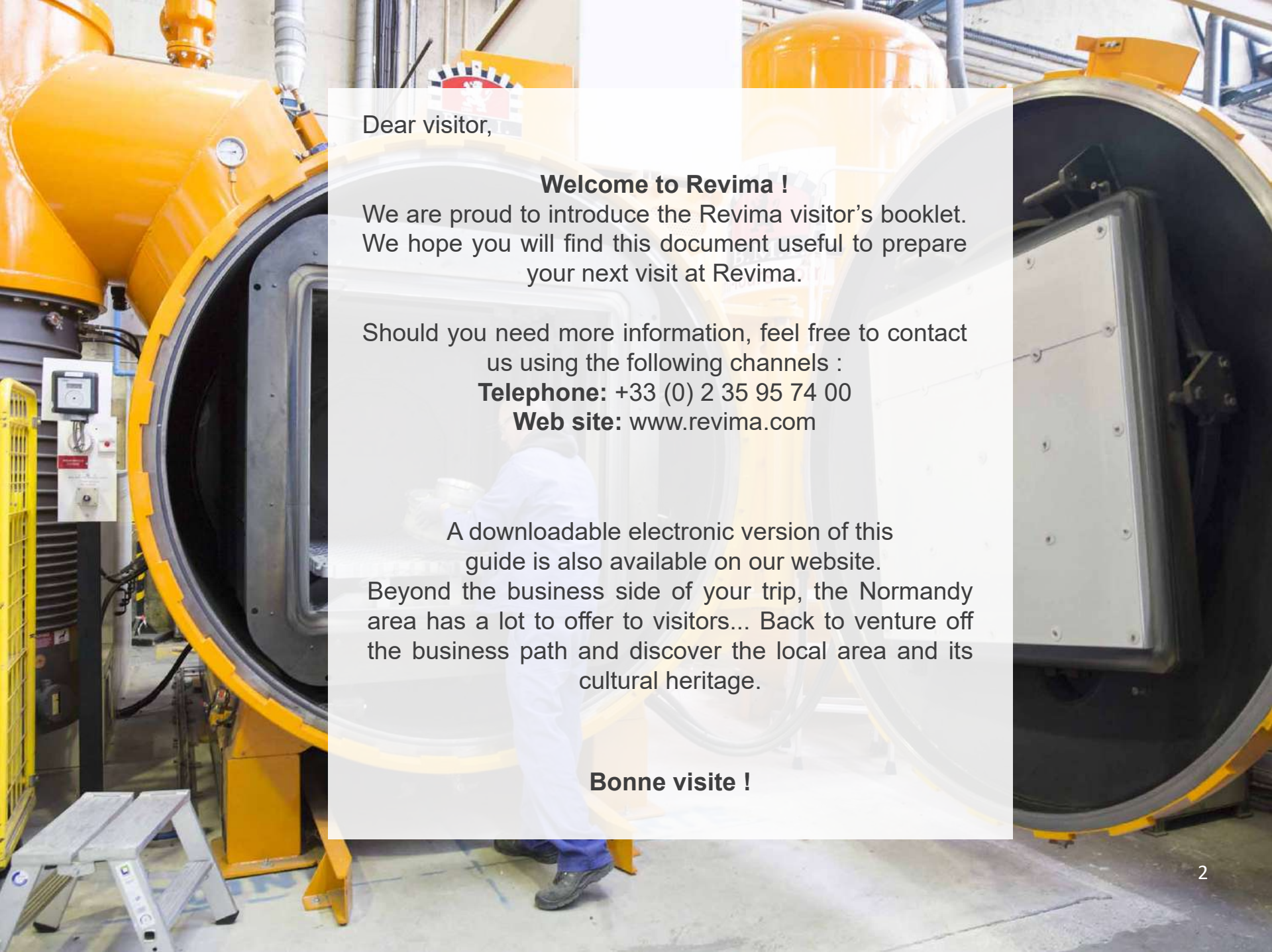




# Revima

## TRAVEL BOOK 2025





Dear visitor,

**Welcome to Revima !**

We are proud to introduce the Revima visitor's booklet.  
We hope you will find this document useful to prepare  
your next visit at Revima.

Should you need more information, feel free to contact  
us using the following channels :

**Telephone:** +33 (0) 2 35 95 74 00

**Web site:** [www.revima.com](http://www.revima.com)

A downloadable electronic version of this  
guide is also available on our website.

Beyond the business side of your trip, the Normandy  
area has a lot to offer to visitors... Back to venture off  
the business path and discover the local area and its  
cultural heritage.

**Bonne visite !**

# LIST OF CONTENTS

**4**

**ABOUT US**

**6**

**LOCATION AND  
DIRECTIONS**

**8**

**ACCOMODATIONS  
RESTAURANTS**

**22**

**PLACES OF  
INTEREST**







# ABOUT US



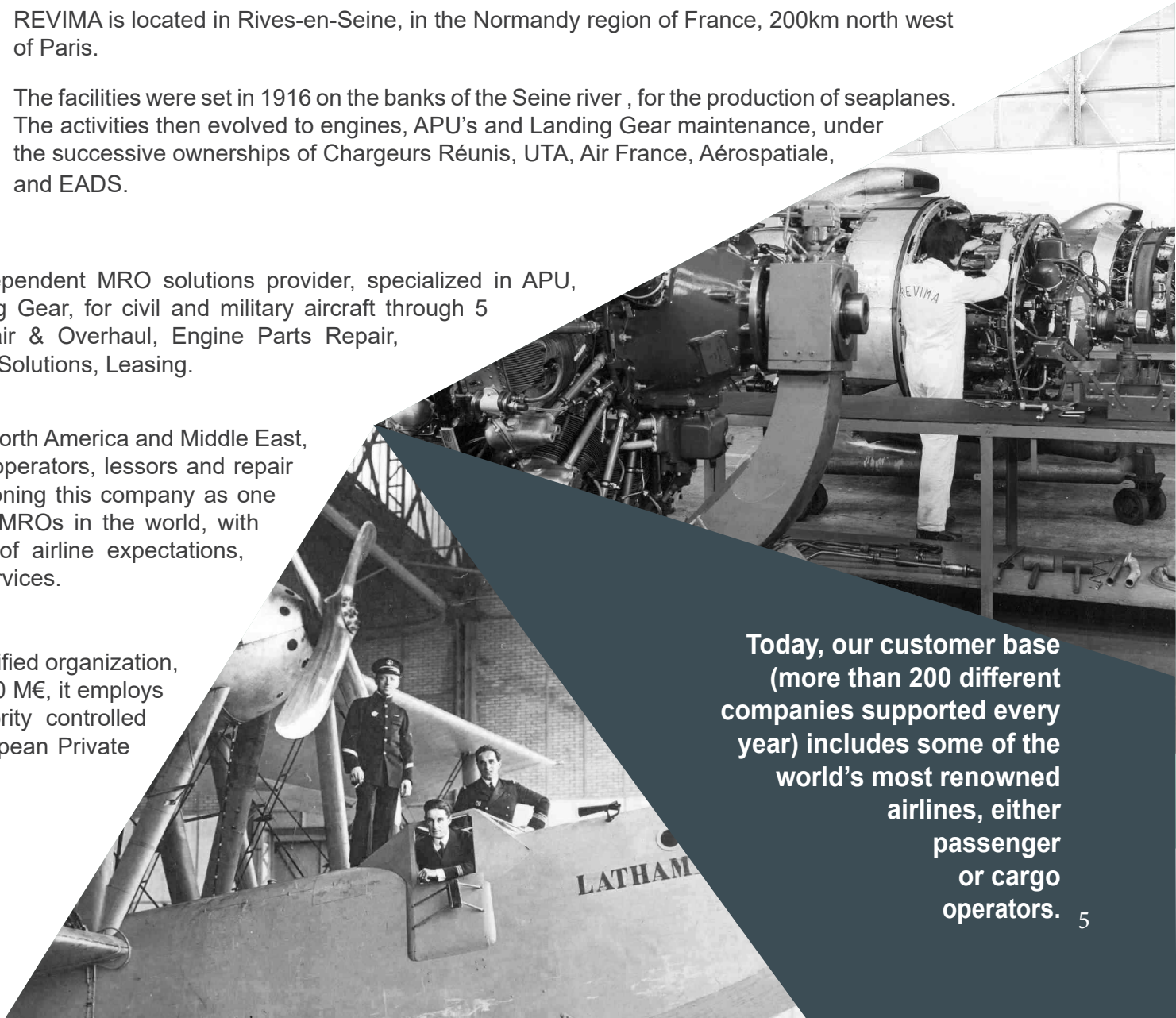
REVIMA is located in Rives-en-Seine, in the Normandy region of France, 200km north west of Paris.

The facilities were set in 1916 on the banks of the Seine river, for the production of seaplanes. The activities then evolved to engines, APU's and Landing Gear maintenance, under the successive ownerships of Chargeurs Réunis, UTA, Air France, Aérospatiale, and EADS.

Revima is a leading independent MRO solutions provider, specialized in APU, Engine Parts and Landing Gear, for civil and military aircraft through 5 dedicated services: Repair & Overhaul, Engine Parts Repair, Material Solutions, Digital Solutions, Leasing.

Located in France, Asia, North America and Middle East, Revima supports aircraft operators, lessors and repair stations worldwide, positioning this company as one of the most experienced MROs in the world, with extensive understanding of airline expectations, best in class value and services.

EASA & FAA Part 145 certified organization, with sales in excess of 300 M€, it employs +1300 people & is majority controlled by Ardian, a leading European Private Equity.



Today, our customer base (more than 200 different companies supported every year) includes some of the world's most renowned airlines, either passenger or cargo operators.





# LOCATION AND DIRECTIONS



**AIRPORT** Orly Airport to  
REVIMA: 2h

Roissy - Charles-de-Gaulle  
Airport to REVIMA : 2h30

**TRAINS** Approximative duration from:  
- Paris St-Lazare station  
to Yvetot station: 1h45  
- Rouen station  
to Yvetot station: 0h25

**TAXIS** Taxis ROBERT  
Tel: 33 (0)2 35 96 15 98

Private Shuttle Rouen-Orly-Roissy  
Tel : 33 (0)6 88 14 67 82

**GPS** 49.52311, 0.74974





# ACCOMODATIONS AND RESTAURANTS



# Hôtel de Bourgtheroulde \*\*\*\*\*

15 Pl. de la Pucelle, 76000 Rouen

Tel: +33 2 35 14 50 50

[www.hotelsparouen.com/](http://www.hotelsparouen.com/)

Price: around 230€

36km from Revima Rives-en-Seine/Caudebec-en-Caux



## Radisson Blu \*\*\*\*

6-8 Rue du Donjon, 76000 Rouen

Tel: +33 2 77 64 57 57

<https://www.radissonhotels.com/en-us/>

Price: around 170€

36km from Revima Rives-en-Seine/Caudebec-en-Caux





A modern hotel room with a large bed, a desk, and a window with curtains. The room features a large bed with a dark headboard and white linens. A desk with a chair is visible on the left, and a window with sheer and dark curtains is in the center. The walls are a warm orange color, and the floor is light wood.

## Urban Style Hôtel de l'Europe\*\*\*

87 Rue aux Ours, 76000 Rouen

Tel: +33 2 32 76 17 76

[www.logishotels.com/fr/hotel/-400780?partid=1535](http://www.logishotels.com/fr/hotel/-400780?partid=1535)

Price: around 80€

35km from Revima Rives-en-Seine/Caudebec-en-Caux



# Hôtel Mercure Rouen Centre Cathédrale \*\*\*\*

7 rue de la Croix de Fer, 76000 Rouen

Tel: +33 2 35 52 69 52


<https://all.accor.com/hotel/1301/index.fr.shtml>

Price: around 160€

37km from Revima Rives-en-Seine/Caudebec-en-Caux







## Le Clos de la Vaupalière\*\*\*

Rue Louis-Joseph Gay-Lussac, 76150 La Vaupalière

Tel: +33 2 35 33 03 30

<https://www.closvaupaliere.fr/>

Price: around 100€

27km from Revima Rives-en-Seine/Caudebec-en-Caux

# Novotel Rouen Centre Cathédrale\*\*\*\*

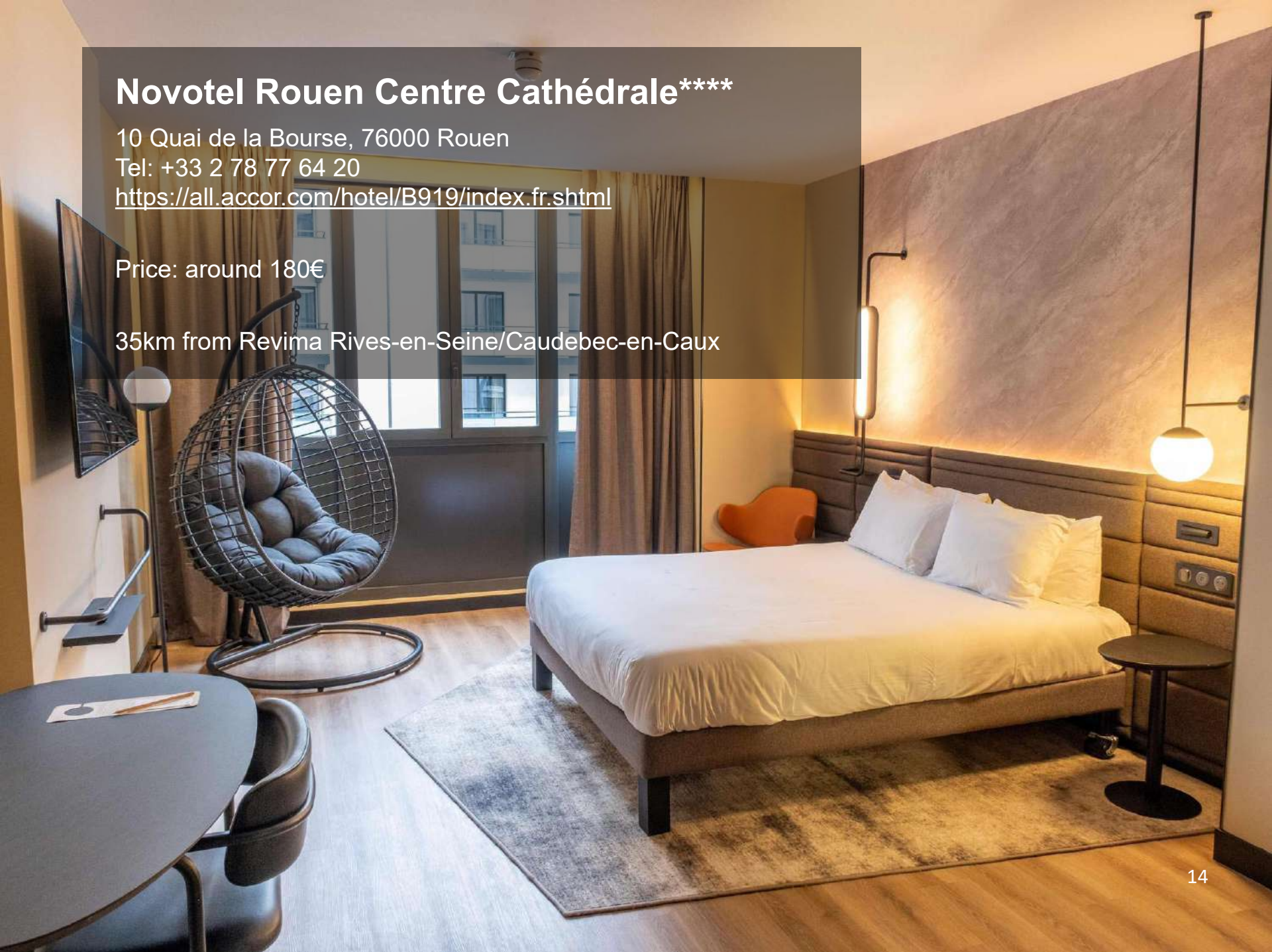
10 Quai de la Bourse, 76000 Rouen

Tel: +33 2 78 77 64 20

<https://all.accor.com/hotel/B919/index.fr.shtml>

Price: around 180€

35km from Revima Rives-en-Seine/Caudebec-en-Caux







## **Manoir de l'Aumônerie**

54 Chem. Saint-Gorgon, 76840 Saint-Martin-de-Boscherville

Tel: +33 6 64 33 27 48

<https://www.manoirdelaumonerie.fr/>

Price: around 200€

27km from Revima Rives-en-Seine/Caudebec-en-Caux

## Hôtel Restaurant Logis Le Normandie\*\*

19 Quai Guilbaud, 76490 Rives-en-Seine

Tel: +33 2 35 96 25 11

<https://www.le-normandie.fr/>

Price: around 90€

1km from Revima Rives-en-Seine/Caudebec-en-Caux







## La Maison Plume

1 Rue Ernest Binet, 76490 Rives-en-Seine

Tel: +33 6 84 25 32 95

<https://www.lamaisonplume.com/>

Price: around 180€

5km from Revima Rives-en-Seine/Caudebec-en-Caux

# RESTAURANTS AT RIVES EN SEINE



## **Au Fil du Temps**

34 Rue Saint-Clair, 76490 Rives-en-Seine

TEL: +33 2 35 16 41 16

Price: 20 - 30€

1 km from Revima Rives-en-Seine/Caudebec-en-Caux

## **Magnolia**

12 Rue Louis le Gaffric, 76490 Rives-en-Seine

TEL: +33 2 79 49 09 30

<http://www.magnolia-villequier.fr/>

Price: 30 - 50€

5 km from Revima Rives-en-Seine/Caudebec-en-Caux

## **Manoir de Rétival**

2 Rue Saint-Clair, 76490 Rives-en-Seine

TEL: +33 6 50 23 43 63

<https://restaurant-ga.fr/>

Price: 100€

0,5 km from Revima Rives-en-Seine/Caudebec-en-Caux



# RESTAURANTS AT RIVES EN SEINE

## **Skáli**

2 Pl. de l'Église, 76490 Rives-en-Seine

TEL: +33 6 69 51 75 99

<https://www.skalirestaurant.fr/>

Price: 30-50€

1 km from Revima Rives-en-Seine/Caudebec-en-Caux

## **L'Auberge du Val au Cesne**

140 D5, 76190 Croix-Mare

TEL: +33 2 35 56 63 06

<http://www.valaucesne.fr/>

Price: 30-50€

11 km from Revima Rives-en-Seine/Caudebec-en-Caux

## **La Caillouville**

5 Pl. de l'Église, 76490 Rives-en-Seine

TEL: +33 2 32 70 85 95

Price: 30-50€

2 km from Revima Rives-en-Seine/Caudebec-en-Caux

# RESTAURANTS AT ROUEN

## GILL CÔTÉ BISTROT

14 PL. du Vieux Marché  
Tel: +33 2 35 89 88 72

QUALITY/PRICE: \*\*

<https://www.gill-cote-bistro.fr/>

## LES NYMPHÉAS

7 rue de la Pie  
Tel: +33 2 35 89 26 69

QUALITY/PRICE: \*\*\*

<https://www.lesnymphéas-rouen.fr/>

## LA PÊCHERIE

29 place Basse Vieille Tour  
Tel: +33 2 35 88 71 00

QUALITY/PRICE: \*\*\*

[www.lapecherie.fr](http://www.lapecherie.fr)

## RESTAURANT COCORICO

107 All. François Mitterrand  
Tel: +33 2 78 77 11 36

QUALITY/PRICE: \*\*

[www.cocorico-rouen.com](http://www.cocorico-rouen.com)

## LE P'TIT ZINC

20 place du Vieux Marché  
Tel: +33 2 35 89 39 69

QUALITY/PRICE: \*

<https://www.restaurant76.fr/>

## LE 6eme SENS

12 rue Thomas Corneille  
Tel: +33 2 35 88 43 97

QUALITY/PRICE: \*\*

[www.le-sixiemesens.fr](http://www.le-sixiemesens.fr)



# RESTAURANTS AT ROUEN

## L'ODAS

4 Pass. Maurice Lenfant  
Tel: +33 2 35 73 83 24

QUALITY/PRICE: \*\*\*  
<https://ludas.fr/>

## LES MARAÎCHERS

37 Pl. du Vieux Marché  
Tel: +33 2 35 71 57 73

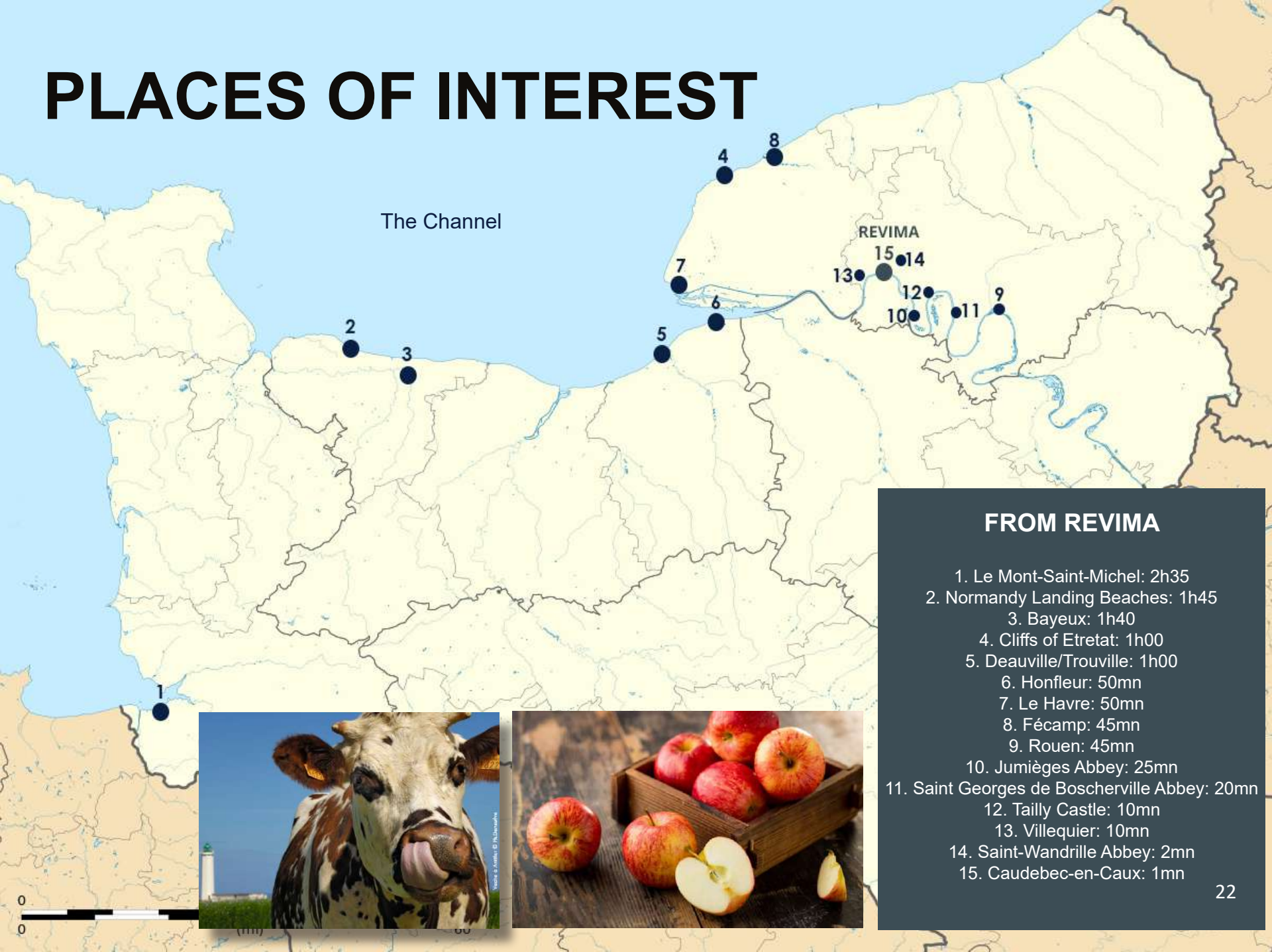
QUALITY/PRICE: \*\*  
<https://www.lesmaraichers.com/>

## BRASSERIE PAUL

1 Pl. de la Cathédrale  
Tel: +33 2 35 71 86 07

QUALITY/PRICE: \*\*  
<https://www.brasserie-paul.com/>

# PLACES OF INTEREST



The Channel

REVIMA

## FROM REVIMA

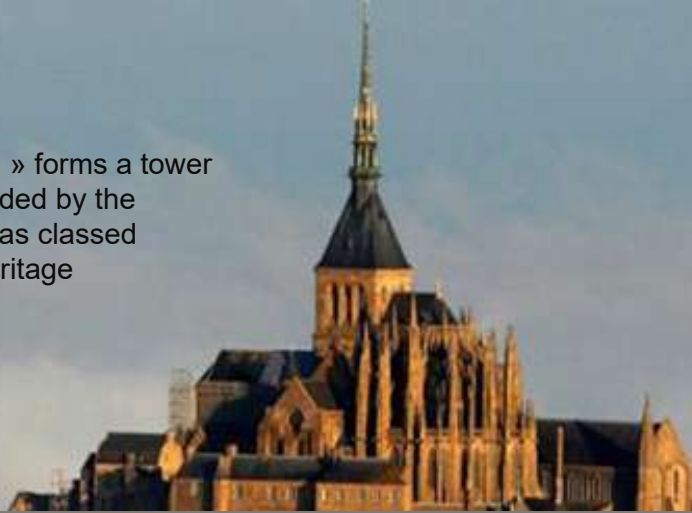
1. Le Mont-Saint-Michel: 2h35
2. Normandy Landing Beaches: 1h45
3. Bayeux: 1h40
4. Cliffs of Etretat: 1h00
5. Deauville/Trouville: 1h00
6. Honfleur: 50mn
7. Le Havre: 50mn
8. Fécamp: 45mn
9. Rouen: 45mn
10. Jumièges Abbey: 25mn
11. Saint Georges de Boscherville Abbey: 20mn
12. Tailly Castle: 10mn
13. Villequier: 10mn
14. Saint-Wandrille Abbey: 2mn
15. Caudebec-en-Caux: 1mn





## The Mont Saint Michel

The « Wonder of the Western World » forms a tower in the heart of an immense bay invaded by the highest tides in Europe. UNESCO has classed the Mont Saint-Michel as a world heritage in 1979 and this mecca of tourism welcomes more than 2,5 millions visitors a year.



## The Bayeux Tapestry

Each year visitors from around the world come to the world come to the museum to admire this key work of the Middle Ages. Listed "World Heritage" by UNESCO, the 70 meters long Tapestry recounts the Conquest of England by William, Duke of Normandy.



## Normandy Landing Beaches

### The Battle of Normandy

6th June 1944: the greatest battle of the Second World War began here, in Normandy. Normandy is a genuine open-air museum throughout which the vestiges of the D-Day Landing beaches and the Battle of Normandy are still visible to this very day: artillery batteries, bunkers, cemeteries...

Signposted routes and several museums offer you a fascinating insight into the story of the Normandy Landings. Immerse yourself in this remarkable page in History over a guided tour of the D-Day Landing beaches during your stay in Normandy.

### SOUVENEZ-VOUS 44





## Cliffs of Etretat

Like most of the towns along this part of the coast, Etretat was built in a small flat area between two high cliffs. It can only expand inland and already takes all the available space along the coast.



## Honfleur

Nice traditional fishing harbour located on the west side of the seine Estuary. Lots of arts gallery and stylish sea food restaurant.



## Deauville & Trouville



# LE HAVRE

At the mouth of the Seine, the major port of Le Havre is a model of concrete grandeur. Devastated in World War II, with the boldness of its reconstruction, it's been declared a UNESCO World Heritage Site. Don't miss Le Havre's great waterside art museum, or the seaside pleasures of its marina and long pebble beach.

And remember Le Havre is an important cross-Channel ferry port.



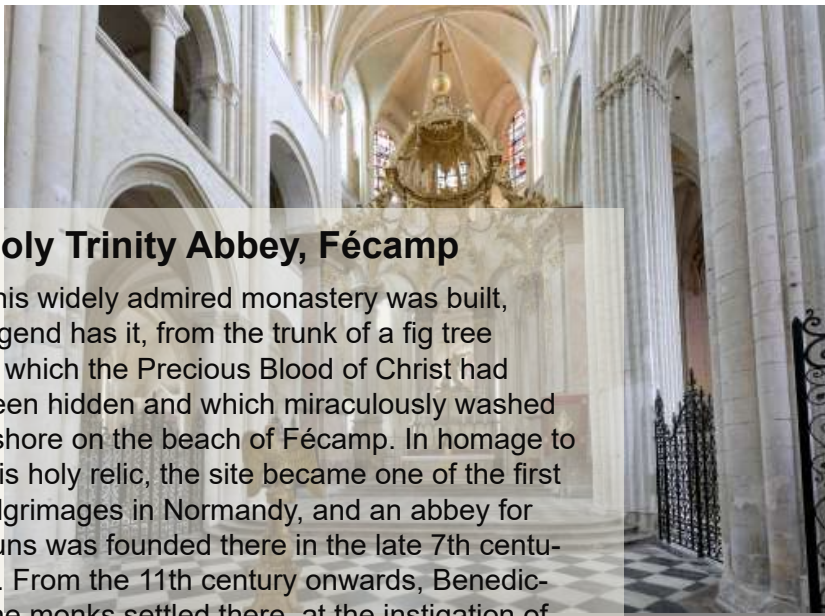


# ROUEN

Port city and capital of Seine-Maritime departement, Haute-Normandie region, northwestern France.  
It is located about 125 km northwest of Paris, on the Seine River, and about 37 km of Revima.

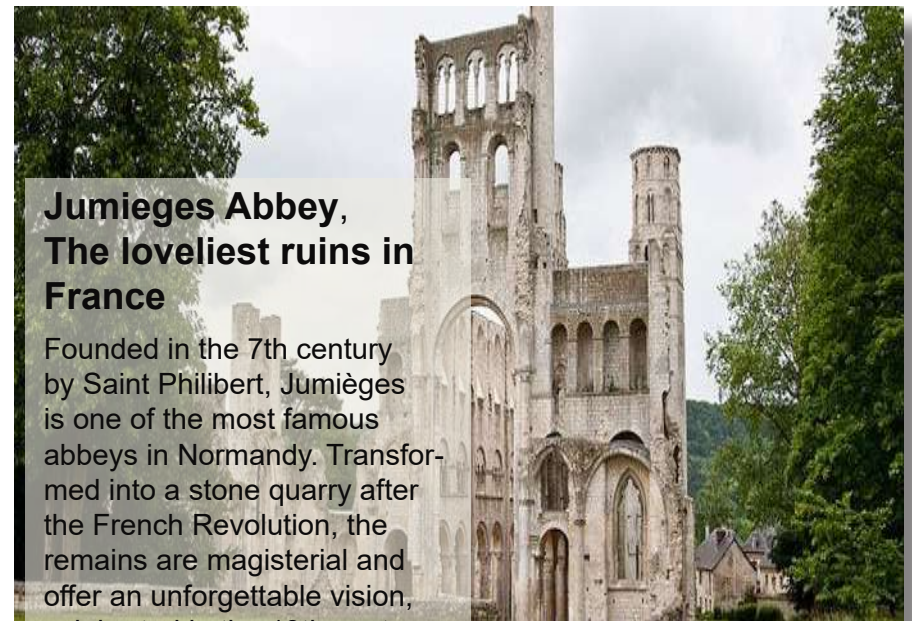






## Holy Trinity Abbey, Fécamp

This widely admired monastery was built, legend has it, from the trunk of a fig tree in which the Precious Blood of Christ had been hidden and which miraculously washed ashore on the beach of Fécamp. In homage to this holy relic, the site became one of the first pilgrimages in Normandy, and an abbey for nuns was founded there in the late 7th century. From the 11th century onwards, Benedictine monks settled there, at the instigation of the Duke of Normandy.



## Jumieges Abbey, The loveliest ruins in France

Founded in the 7th century by Saint Philibert, Jumièges is one of the most famous abbeys in Normandy. Transformed into a stone quarry after the French Revolution, the remains are magisterial and offer an unforgettable vision, celebrated in the 19th century by Victor Hugo.



## Tailly Castle

It is a Renaissance building, begun in the 1530s, with additions from the 17th and 18th centuries that are in complete harmony. The large park offers pleasant views. The stables house an «August of «44» museum about the final days of the Battle of Normandy.



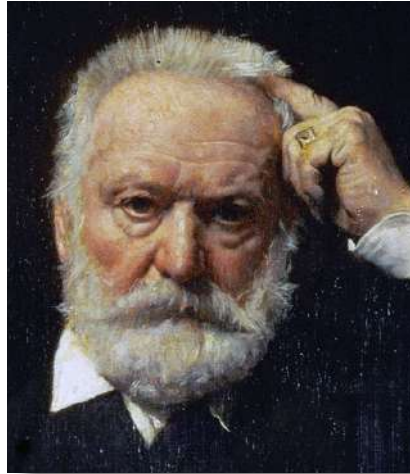
## Saint Georges De Boscherville Abbey

West of Rouen, at the edge of the Forest of Roumare, the high roof of the church's lantern tower rises above the village of Saint-Martin. This large, well-lit church with its balanced spaces presents all the characteristics of Norman Romanesque architecture.



## **Maison Vacquerie - Victor Hugo Museum Villequier**

This elegant 19th century home, which once belong to the Vacquerie family, stands on the edges of the Seine. The museum pays a moving tribute to the literary career of Victor Hugo, and displays souvenirs of Leopoldine, his daughter who drowned in the river in 1843.



## **Caudebec-en- Caux Church**

Built at the turn of the 15th and 16th centuries, Notre Dame of Caudebec-en-Caux is one of the most representative buildings of flamboyant Gothic architecture.

## **Saint-Wandrille Abbey**

Founded in 649 by Saint Wandrille, the abbey of Fontenelle valley is one of the oldest witnesses of the religious establishment in the valley of Caux Valley of Seine.





# FRENCH FOOD SURVIVAL GUIDE

## RESERVATION

Est-ce qu'il faut réserver ?  
Je voudrais faire une réservation  
Nous arriverons à 20 heures  
J'ai une réservation au nom de...  
Avez-vous des tables de libre ?  
Pouvons-nous nous asseoir là-bas ?  
A quelle heure fermez-vous ?

Do we have to make a reservation?  
I'd like to make a reservation  
We'll come at 8 o'clock  
I have a reservation in the name of  
Do you have any free tables?  
Can we sit over there?  
What time do you close?

## SERVICE

Je suis végétarien  
Servez-vous des plats végétariens  
Je suis allergique à...  
Puis-je avoir du pain ?

I'm vegetarian  
Do you serve vegetarian food?  
I'm allergic to...  
May I have some bread?

## TALKING ABOUT

Santé! tchin-Tchin!  
C'était très bon  
Ce n'est pas assez cuit  
C'est trop cuit  
Le vin est excellent

Cheers!  
It was very good  
This is not cooked enough  
This is over cooked  
The wine is excellent

## ORDERING

La carte s'il vous plait ?  
Quel est le plat du jour ?  
Nous voudrions commander.  
Quelle est la spécialité de la maison ?  
Comme entrée je voudrais...  
Comme plat principal je voudrais...  
Comme dessert je voudrais...  
Comme boisson je voudrais...  
La carte des vins s'il vous plait

The menu please  
What is the dish of the day?  
We would like to order  
What is the specialty of the house?  
For starters, I would like...  
For main course, I would like...  
For dessert I would like...  
To drink, I would like...  
The wine list please

## PAY

L'addition, s'il vous plait  
Je voudrais payer maintenant s'il vous plait  
Nous payons ensemble / séparément  
Combien je vous dois ?

The bill please  
I would like to pay now, please  
We are paying together / separately  
How much do I owe?